



# MANIGLIE

HANDLES

maniglie

profili gola

profili decorativi

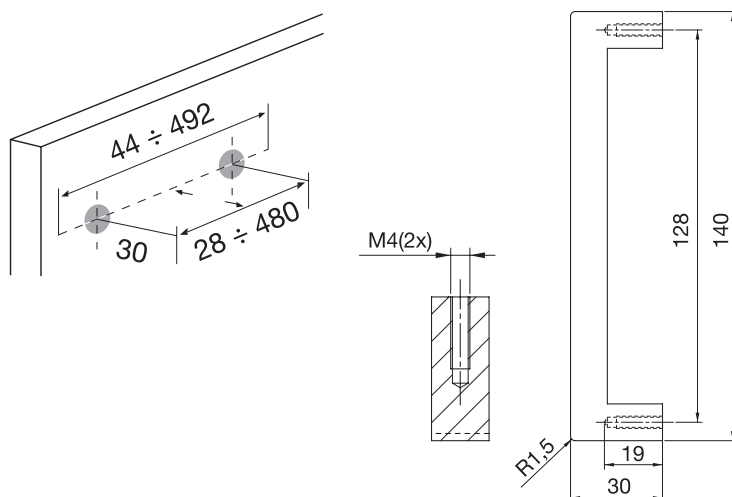
alzatine


CODE  
**740**

maniglia in alluminio  
aluminium handle



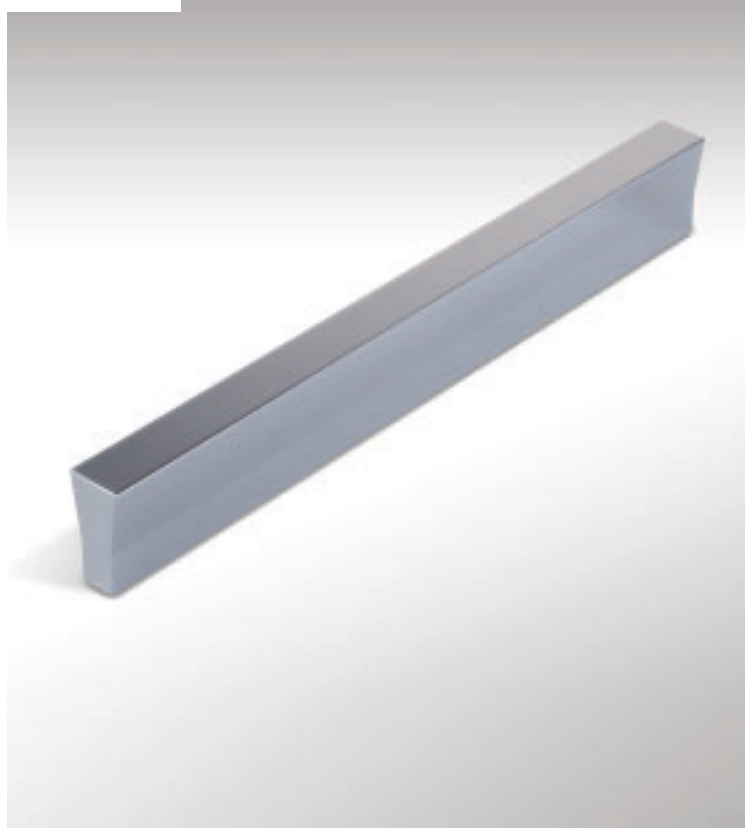
CARATTERISTICHE TECNICHE SPECIFICATIONS



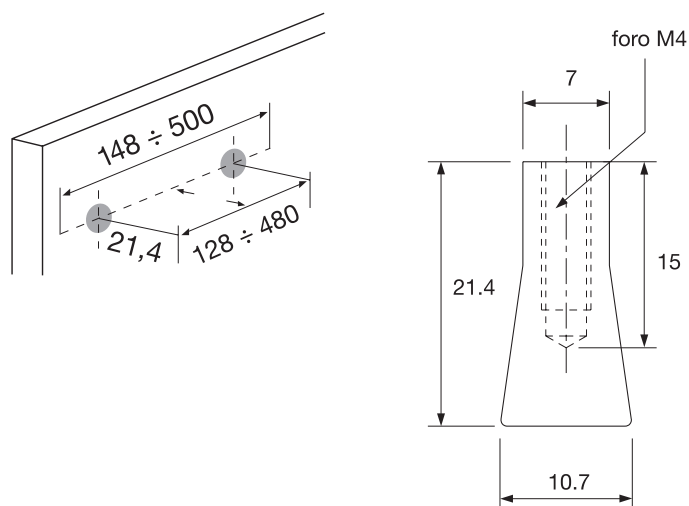
codice code			
	L (mm)	P./D.	INT. (mm)
90740044000000	44	30	28
90740140000000	140	30	128
90740204000000	204	30	192
90740492000000	492	30	480


CODE  
**022**

maniglia in alluminio  
aluminium handle



CARATTERISTICHE TECNICHE SPECIFICATIONS



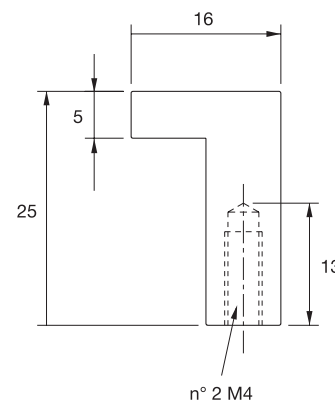
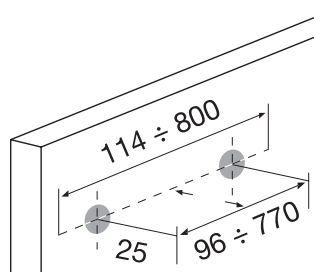
codice code			
	L (mm)	P./D.	INT. (mm)
90022148000000	148	21,4	128
90022212000000	212	21,4	192
90022500000000	500	21,4	480


CODE  
**092**

maniglia in alluminio  
aluminium handle



CARATTERISTICHE TECNICHE SPECIFICATIONS



codice code			
	L (mm)	P./D.	INT. (mm)
90092114000000	114	25	96
90092210000000	210	25	192
90092350000000	350	25	320
90092500000000	500	25	470
90092800000000*	800	25	770*

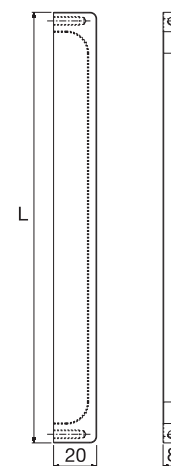
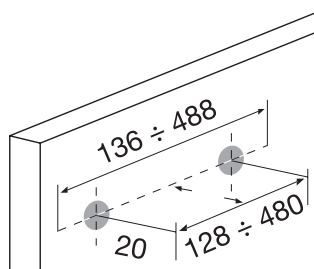
\* con 1 foro aggiuntivo INT. 385 with 1 additional hole INT. 385


CODE  
**112**

maniglia in alluminio  
aluminium handle



CARATTERISTICHE TECNICHE SPECIFICATIONS



codice code			
	L (mm)	P./D.	INT. (mm)
90112136000000	136	20	128
90112200000000	200	20	192
90112488000000*	488	20	192/480*

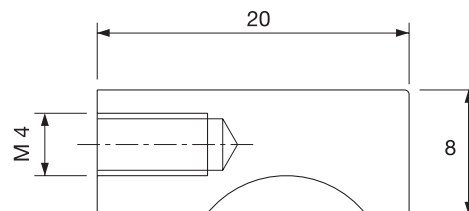
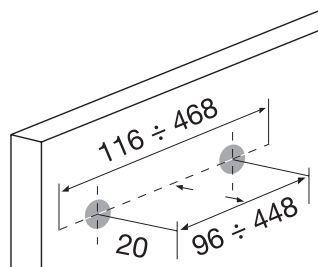
\* con 2 fori aggiuntivi INT. 192 whit 2 additional holes INT. 192


CODE  
**033**

maniglia in alluminio  
aluminium handle



CARATTERISTICHE TECNICHE SPECIFICATIONS



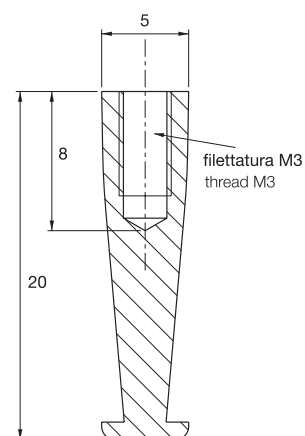
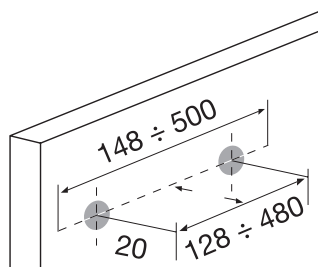
codice code			
	L (mm)	P./D.	INT. (mm)
9003311600000	116	20	96
9003346800000	468	20	448


CODE  
**018**

maniglia in alluminio  
aluminium handle



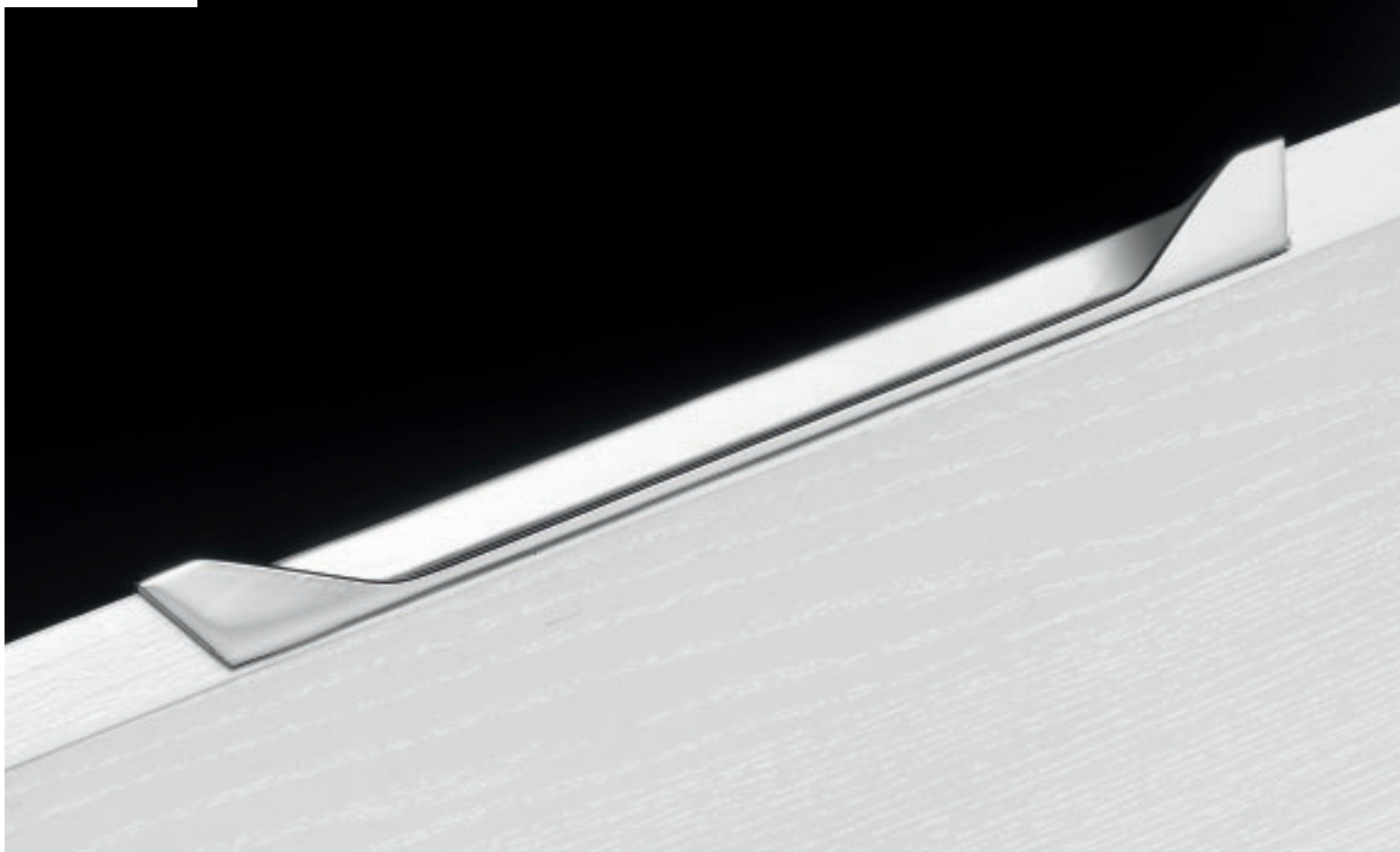
CARATTERISTICHE TECNICHE SPECIFICATIONS



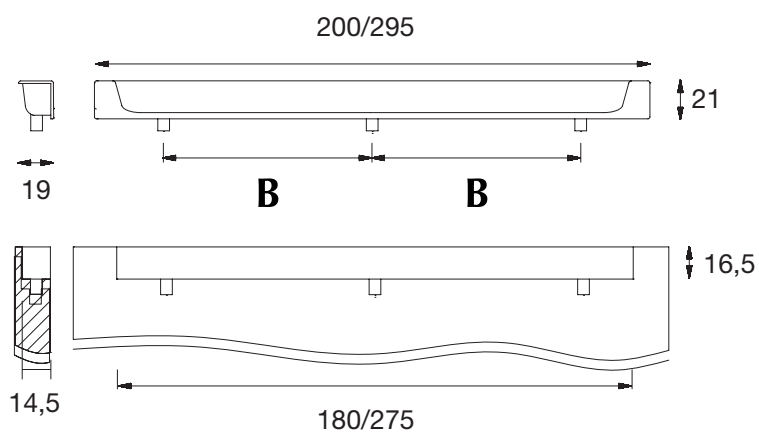
codice code			
	L (mm)	P./D.	INT. (mm)
9001814800000	148	20	128
9001821200000	212	20	192
9001850000000	500	20	480


CODE  
**1067**

maniglia ad incasso in alluminio  
insertion aluminium handle



CARATTERISTICHE TECNICHE SPECIFICATIONS



codice code			
	L (mm)	P./D.	INT. (mm)
90106720000000	200	19	128
90106729500000	295	19	224*

\* con foro aggiuntivo INT.112 with one additional hole INT.112